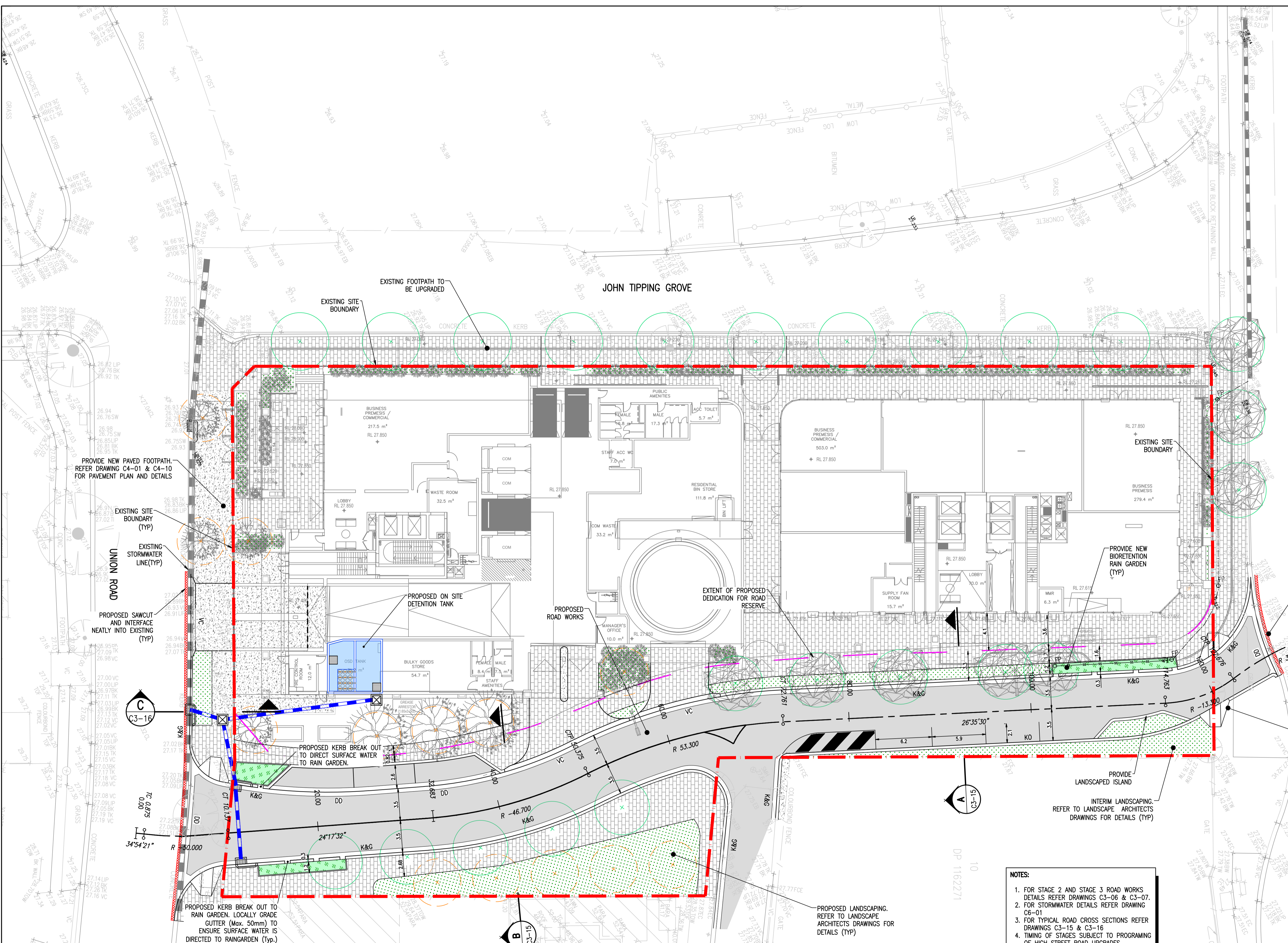
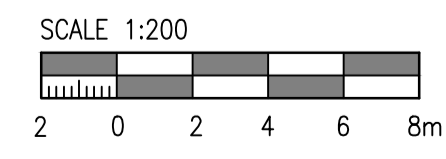


LEGEND	
	EXISTING SITE BOUNDARY
	EXTENT OF PROPOSED DEDICATION FOR ROAD RESERVE
	PROPOSED ROAD CENTRELINE
	PROPOSED KERB AND GUTTER
	PROPOSED KERB ONLY
	PROPOSED DISH DRAIN
	PROPOSED VEHICULAR CROSSING
	PROPOSED STORMWATER PIPE
	EXISTING STORMWATER PIPE
	PROPOSED STORMWATER KERB INLET PIT
	PROPOSED STORMWATER JUNCTION PIT
	PROPOSED ASPHALT PAVEMENT
	PROPOSED CONCRETE PAVEMENT
	PROPOSED PAVED PAVEMENT TO LANDSCAPE ARCHITECTS' DETAIL
	EXISTING FOOTPATH TO BE REPAIRED AND MAKE GOOD
	PROPOSED RAIN GARDEN
	PROPOSED MASS PLANTING
	PROPOSED OSD
	PROPOSED SAWCUT
	PROPOSED LANDSCAPE TREES
	EXISTING TREES TO BE REMOVED
	EXISTING TREES TO BE RETAINED
	FFL 27.85
	27.85
	PROPOSED FINISHED FLOOR LEVEL
	PROPOSED SPOT LEVEL
	PROPOSED LIGHT POLE



- NOTES:**
- FOR STAGE 2 AND STAGE 3 ROAD WORKS DETAILS REFER DRAWINGS C3-06 & C3-07.
  - FOR STORMWATER DETAILS REFER DRAWING C6-01
  - FOR TYPICAL ROAD CROSS SECTIONS REFER DRAWINGS C3-15 & C3-16
  - TIMING OF STAGES SUBJECT TO PROGRAMMING OF HIGH STREET ROAD UPGRADES.



Rev	Revision Description	By	App	Date
1	ISSUED FOR FINAL COORDINATION	SM	CW	23.05.18
2	ISSUED FOR DEVELOPMENT APPLICATION	SM	CW	28.05.18
3	ISSUED FOR DEVELOPMENT APPLICATION	SM	CW	04.06.18
4	ISSUED FOR DEVELOPMENT APPLICATION	SM	CW	04.06.18
5	ISSUED FOR DEVELOPMENT APPLICATION	SM	CR	18.06.18
6	ISSUED FOR DEVELOPMENT APPLICATION	SM	CR	19.06.18
7	ISSUED FOR REVIEW	CW	CR	17.10.18
8	ISSUED FOR REVIEW	RG	CW	26.03.19
9	RAIN GARDEN REINSTATED	RG	CW	29.03.19
10	ISSUED FOR DEVELOPMENT APPLICATION	SM	CR	05.05.19

Rev	Revision Description	By	App	Date
11	ISSUED FOR DEVELOPMENT APPLICATION	MC	CW	21.02.20

Disclaimer: Robert Bird Group Pty Ltd (RBG) and its related entities (RBE) do not warrant the accuracy, currency or completeness of any information or data they supply or transmit by electronic means. You are responsible for verifying that any information or data supplied or transmitted by electronic means matches the information or data on the corresponding PDF or DWG version issued by RBG. RBG will not be liable for any loss or damage you or any other party incur as a result of acting in reliance on any information or data supplied or transmitted by electronic means and you release RBG from any liability for any loss or damage however caused which you or any other party may directly or indirectly suffer in connection with your access to or use of that information or data. Unless agreed otherwise by Robert Bird Group Pty Ltd (RBG) and you (RBE) under 010 580 248 in writing, intellectual property rights in any information or data supplied or transmitted to you (including copyright in all text, graphics, logos, icons, sound recordings and software) are owned by, or licensed to, RBG. Other than for purposes authorized by RBG in writing, you must not copy, adapt, reproduce, store, publish or communicate any information or data supplied or transmitted by electronic means without RBG's prior written permission. © Robert Bird Group Pty Ltd 2017

**DO NOT SCALE DRAWINGS, USE FIGURED DIMENSIONS REFER TO GENERAL NOTES UNLESS NOTED OTHERWISE**

Structural, Civil & Construction Engineering Consultant

**RobertBirdGroup**

BRISBANE OFFICE  
 Robert Bird Group Pty Ltd  
 PO Box 433,  
 Fortitude Valley QLD 4006  
 Level 1, 480 St Pauls Terrace  
 Fortitude Valley QLD 4006

Ph: (07) 3319 2777  
 Fax: (07) 3319 2799  
 Email: brisbane@robertbird.com.au  
 Web: www.robertbird.com  
 ACN 010 580 248

Client

**TOGA**

Title  
**STAGING PLAN – STAGE 1 – CONNECTING TO EXISTING ROUND ABOUT**

Project  
**HIGH STREET PENRITH**

Scale of A1  
 AS SHOWN  
 Date  
 24.02.20

Drawn  
 S.MANANDHAR

Design  
 Z.JONES

Design Checker  
 C.ROPE

Approved  
 C.WAITE

Job Number  
 17665C

**NOT FOR CONSTRUCTION**

Drawing Number  
**C3-05**

Revision  
**11**

ISSUED FOR DEVELOPMENT APPLICATION